



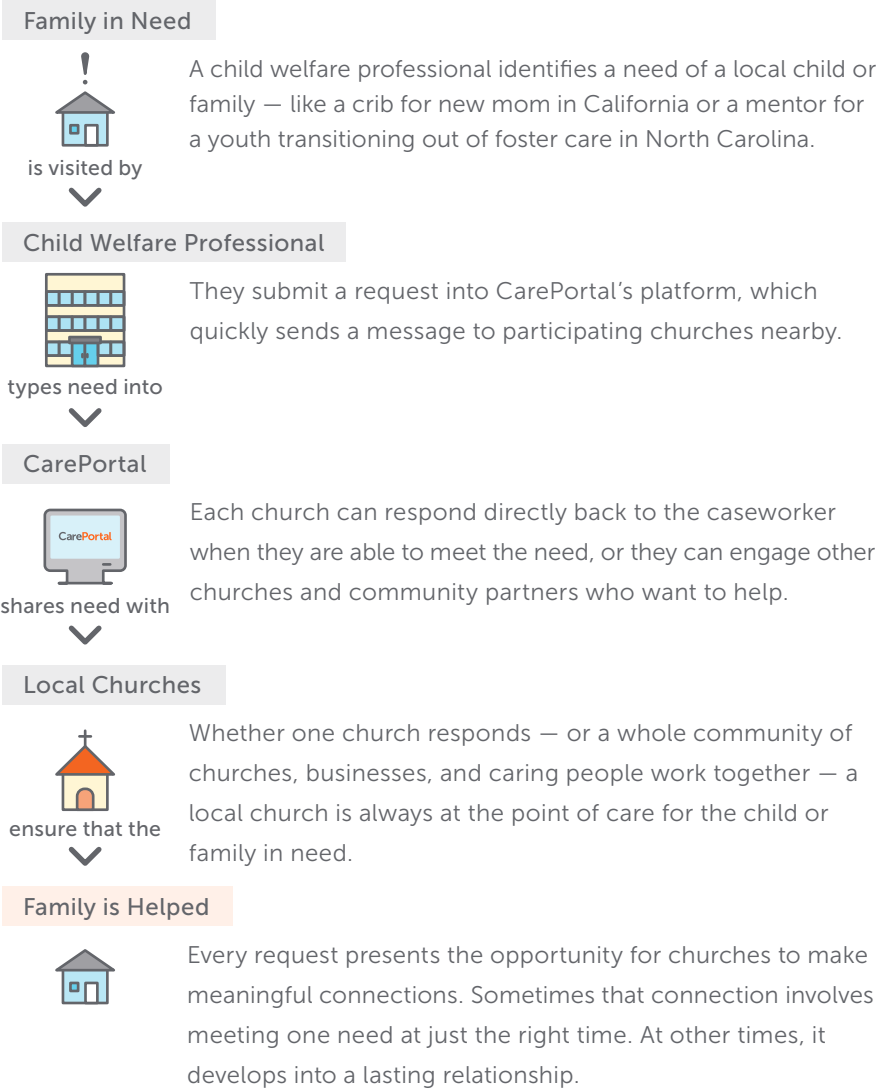
In every community, there are children and families in crisis, who need help.

In those same communities, there are churches and people who care and want to take action.

But what they need is a connection point.



# HOW CAREPORTAL WORKS



# MAKE A CONNECTION

When local churches step up to meet tangible needs of local children and families in crisis, the story is just beginning. The grid below provides a window to see the possibilities for supporting vulnerable children and families in crisis across the child welfare spectrum.

	Prevention	Foster Care	Adoption	Transition
TIER 1 Physical	Provide resources to stabilize the environment of children and their caregivers.			
TIER 2 Relational	Support children and families through time and relationship.			
TIER 3 Family	Open your home to children or families, temporarily or permanently.			

“We love having the opportunity to meet needs in our community, city, and country. The more we meet these needs, the more we look like the Church.”

— Missouri Pastor





## CONNECTED BY TECHNOLOGY. POWERED BY PEOPLE. LED BY GOD.





You have a heart to serve. Child welfare professionals are overwhelmed daily by needs of children and families in their communities. CarePortal bridges the gap between children in need and churches who want to help.

“Whatever you did for one of the least of these . . . you did for me.”  
— Jesus | Matthew 25:40

# EXPAND YOUR MINISTRY

CarePortal equips churches and ministries with a heart to help local children and families in crisis. Backed by CarePortal technology, training and support, each church in the CarePortal network commits to pray, give and serve.

## Activate Your Church

-  1. Go to [careportal.org/enroll](https://careportal.org/enroll)
-  2. Identify a point person
-  3. Attend an orientation
-  4. Submit your action plan

## Become an Implementing Partner

Use CarePortal to advance the work your ministry is already doing through churches in your community. Learn more at [careportal.org/ip-discovery](https://careportal.org/ip-discovery).

## Not a Church?

For information on how you can meet needs as an individual, business, or organization, visit [careportal.org/needs](https://careportal.org/needs).



@careportal

3161 Wyandotte St.  
Kansas City, MO 64111

816.536.8333

[careportal.org](https://careportal.org)

A platform of  THE GLOBAL ORPHAN PROJECT

# CarePortal

Connecting you to children and families in crisis.

